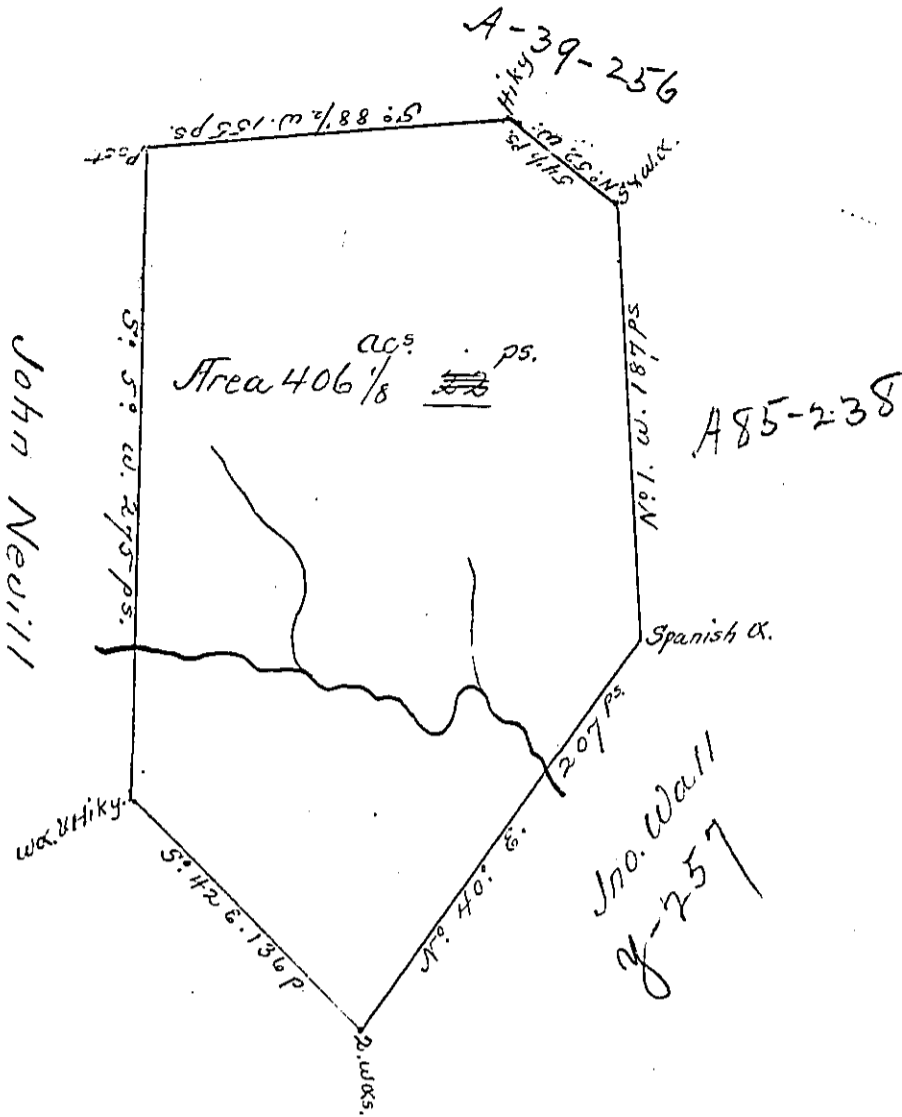


Page 231



A Draught of a Survey lying on Peters Crk. in Washington County, contg 406 acs. & 22 ps without the allowance specified June 22d. 1785 for Jno. Nevill Esqr. in pursuance of a certificate granted him in his own name by the Commissioners appointed under the Government of Virg^a which certificate has been legally entered with the County Surveyor as appears by the authenticated List

Entd. 25th. Feby. 1780

Matthew Ritchie

Dep. Sur^r

John Lukens Esqr. Sur^r Genl. }

IN TESTIMONY that the above is a copy of the original remaining on file in the Department of Internal Affairs of Pennsylvania, made conformably to an Act of Assembly approved the 16th day of February, 1833, I have hereunto set my Hand and caused the Seal of said Department to be affixed at Harrisburg, this second day of September 1902

James W. Latta
Secretary of Internal Affairs.